

MiScope[®] Pro Kit

Handheld digital microscope with advanced lighting options

The MiScope[®] (pronounced My-Scope) combines a digital movie camera, precision optics and LED lighting in a microscope that fits in the palm of your hand. **40 - 140X magnification** lets you zoom in on fine details. View the image on your **computer** screen, instead of straining to look into a tiny eyepiece. Capture **images** or **movies**, easily add **labels**, make **measurements** and even **draw** right on the live video image.

The MiScope Pro has a switch to turn off the built-in lighting so you can use the advanced lighting options, like the included portable light table for backlighting or the LED flashlight for oblique lighting. The advanced lighting options will reveal hidden features in your samples.

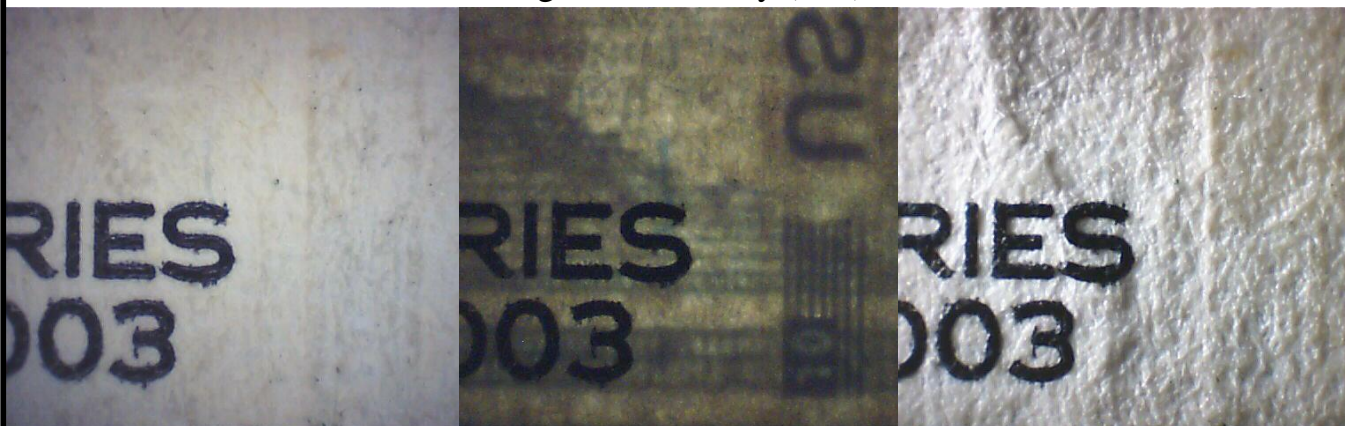
The MiScope connects to your computer's USB port where it's always ready to use. Grab a laptop and take the MiScope anywhere.



Features

- View live images on the computer screen
- 40 — 140x magnification
- Direct, side or back illumination enhances different details in samples
- Completely portable with a laptop computer
- Save still images, movies and time lapse
- Add labels, markers, time stamps, live measurements

Images of Currency (40x)



Top lighting

Back lighting

Side lighting

Applications

- Quality Inspection (Electronics, Metals, Surface Finish, Paints, Textiles, Plastics)
- Graphic Arts and Printing
- Entomology and Plant Pathology
- Forensics (Questioned Documents, Crime Scene, Trace Evidence)

zarbeco, L.L.C.
creative imaging solutions

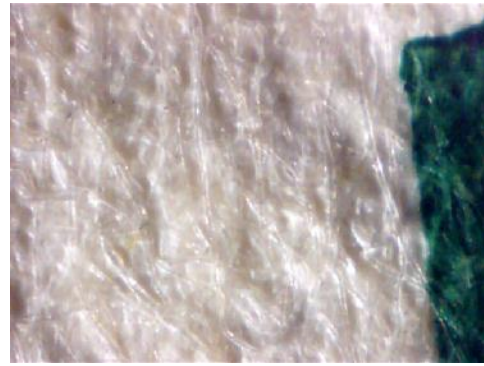
1240 Sussex Tpke, #5, Randolph, NJ 07869
Phone: 973-933-2043 Fax: 973-933-2336
sales@zarbeco.com www.zarbeco.com

MiScope[®] — A new way to see the world

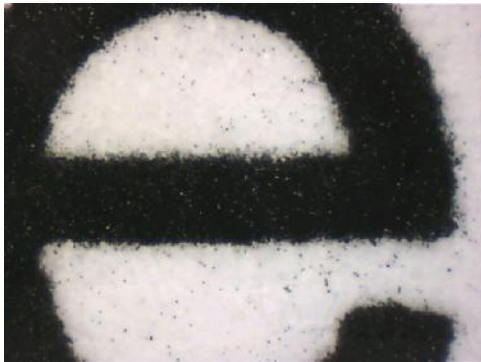
Sample Images



Entomology



Document Examination (Paper fiber)



Print quality (toner speckle)



Micro machined parts

MiScope Pro includes:

- MiScope-SW with a switch to turn off built-in lighting
- Portable light table (4 x 5 inches) for uniform white backlighting
- LED flashlight (1 watt) for directional illumination
- Watertight hard case with custom foam lining
- Video ToolBox software



MiScope Specifications

- | Image Sensor: 1/3" CMOS
- | Pixels: 640 x 480
- | Power: USB port
- | Light Source: 4 super-bright LEDs
- | Field of View
 - @40X: 6 x 8 mm
 - @140X: 1.5 x 2 mm
- | Resolution: 4 microns

Computer Requirements

Pentium III 500MHz or greater,
Windows 2000/XP, DirectX 8.1 or greater, Internet Explorer 5.0 or greater, USB port.

Options

- MiSC-IR-PRO MiScope Pro with added IR lighting
- MiSC-UV-PRO MiScope Pro with added UV lighting
- VTB-GPS GPS option with software and receiver
- MiSC-MAC Macintosh software for the MiScope